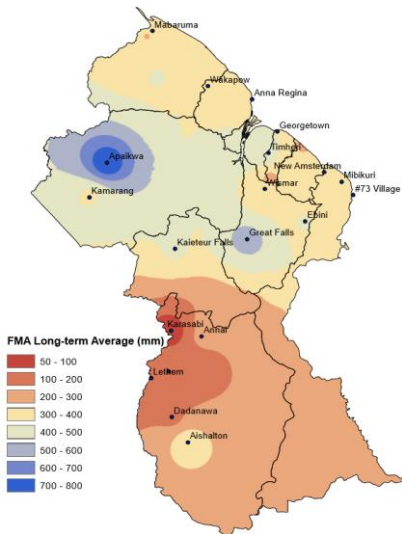




Normal rainfall patterns for February-March-April (FMA)

Normally Northern Guyana would transition into its secondary dry season during the first half of February which usually continues until the end of April. Southern Guyana continues in its dry

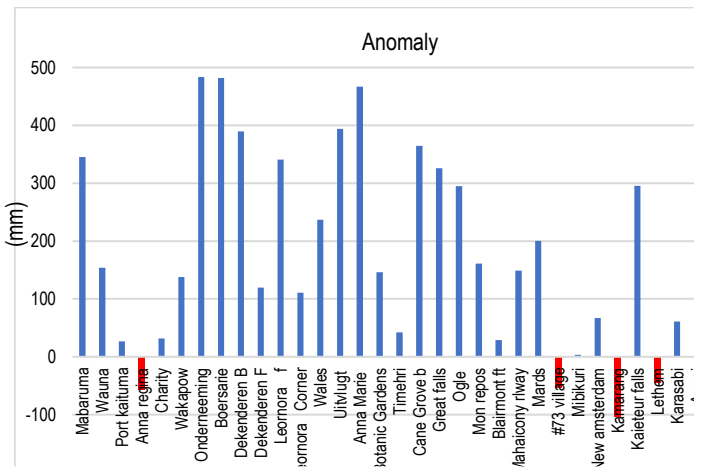
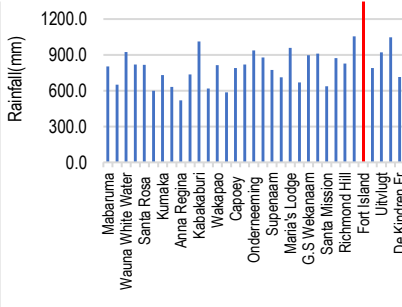
Map - Usual rainfall pattern for FMA



Review for October-November-December (OND)

The average rainfall recorded across Guyana was 619 mm, which was above the long-term average (456 mm). The highest point rainfall total (1462.8 mm) for the period was recorded at Fort Island as in chart below. A mere 17 % of stations recorded rainfall below their long-term averages as shown in anomaly chart to the right.

Average Mean Temperature recorded across Guyana for OND was 28.1°C which was higher than the long-term average (27.8 °C).



Outlook for February-March-April (FMA) 2018

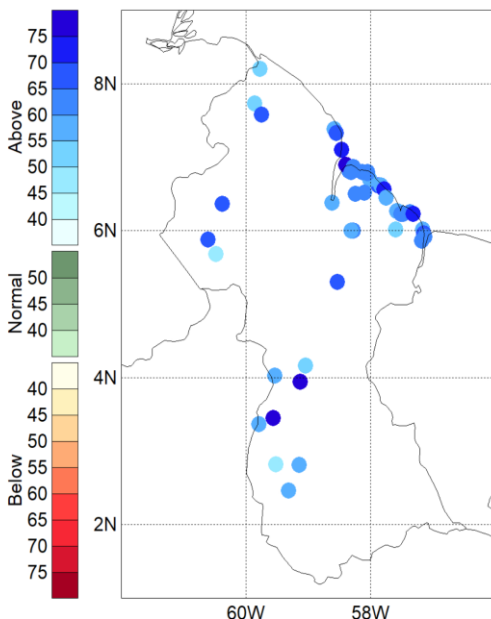
Precipitation: FMA rainfall is likely to be above-normal as shown in probabilistic rainfall map below. Guyana usually experience 22 to 39 wet days (1 wet day ≥ 1.0 mm) during this period, the forecast is 25 to 47 with slightly higher than usual wet spell. Very low chances of potential flooding during this season.

Drought: With the above average rainfall experienced over the past months and the probabilistic forecast for FMA there is no drought concern for northern Guyana. Dry spells during this season is normal.

Temperatures: Cooler than usual temperatures during the nights can be expected.

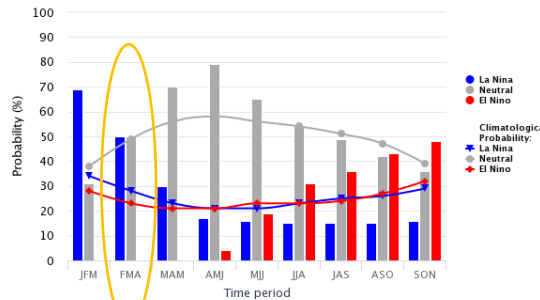
Extended Outlook for May-June-July (MJJ) 2018

The transition period between the dry and wet season is expected to be accompanied by increasing temperatures. This implies a gradual build-up of heat discomfort from April to mid-May. The precipitation outlook trends to a usual or a wetter than usual period, though confidence in this forecast is low.



ENSO Outlook: Most models suggest La Niña conditions to be in place for FMA (50-55% confidence), but a likely return to neutral conditions by MJJ (65-70% confidence). A weak La Niña state will increase chances of wetter conditions, with more shower activity in northern Guyana during FMA.

Mid-Jan IRI/CPC Model-Based Probabilistic ENSO Forecasts
ENSO state based on NINO3.4 SST Anomaly
Neutral ENSO: -0.5 °C to 0.5 °C



Mid-Jan 2018 Plume of Model ENSO Predictions

